








<p>WED CONCURRENT SESSIONS BLOCK 1 1:30 PM – 2:45 PM</p>	<p>Traumatic Brain Injury as a Chronic Health Condition: Long-Term Functional Change and Associated Comorbidities (Tessa Hart, Kristen Dams-O'Connor, Risa Nakase-Richardson, Jessica Ketchum, John Corrigan) #302021 BI, MIL</p>		<p>A Systematic Approach to Behavioral Management on an Interdisciplinary Treatment Team (Jeffrey Wertheimer, Ann Gottuso, Bryce Erich, Erin Moniz) #297435 BI</p>		<p>Understanding Concussion in Children (Juliet Haarbauer-Krupa, Kristy Arbogast, Lara DePadilla, Christina Master) #296678 BI, CP</p>	
<p>THU CONCURRENT SESSIONS BLOCK 2 10:30 AM – 11:45 AM</p>	<p>Cultural Considerations and Impacts for Individuals with TBI (Tamara Bushnik, Angelle Sander, Marlene Vega) #297335 BI</p>	<p>Mark Ylvisaker Lecture: Social Communication in Adolescents with BI: What would Mark do? (Lyn Turkstra, PhD, McMaster University) #332395 PED, BI See more page 36</p> 	<p>From Bench to Bedside: Factors Influencing Successful Implementation of Cognitive Rehabilitation Interventions (L. Swan, C. Carter, A. Groff, V. Mykkelvert, F. Becker, A. Linnestad) #295855 BI, INT</p>	<p>My Husband Would not Want to Live Like This': Difficult Conversations in Disorders of Consciousness (Sunil Kothari, Andrew Dennison, Susan Johnson, Katherine O'Brien, Tana Hall) #296537 BI, CP</p>	<p>MILITARY / VETERANS AFFAIRS MIL An Innovative Approach to Auditory Processing Treatment for Mild TBI in the Military Setting (H Chae, C Zmroczek, S Robarts, H Bronson) #293856 BI, MIL CROSSTAGGED</p> 	
<p>CONCURRENT SESSIONS BLOCK 3 1:45 PM – 3:00 PM</p>						
<p>BRAIN INJURY  INTERDISCIPLINARY SPECIAL INTEREST GROUP</p>		<p>THU 12:00 - 1:30 PM BI-ISIG SUMMIT Open to all CHAUTAUQUA "My Personal Experience is Better Than Your Evidence: Knowledge Translation and Implementation Challenges in BI" #336155</p>				
<p>CONCURRENT SESSIONS BLOCK 4 5:00 PM – 6:15 PM</p>	<p>SPECIAL SYMPOSIUM #301438 BI, CP "Treating Fatigue And Sleep Disturbance Following Traumatic Brain Injury" JENNIE PONSFORD, BA (Hons), MA, PhD, Professor of Neuropsychology and Director, Monash Epworth Rehabilitation Research Centre, Monash University</p>		<p>The Clubhouse Model (David Burke, Emory University) #304953 BI Vocational rehabilitation</p>	<p>Post-traumatic Confusional State: A Case Definition (Mark Sherer, TIRR Memorial Hermann; Douglas Katz, Boston University School of Medicine, Boston University Neurology Associates, HealthSouth Braintree Rehabilitation Hospital; Rehab Yelena Bodien, Spaulding Rehabilitation Hospital) #288467 BI, CP</p>	<p>Perspectives on Community Reintegration of Veterans and Service Members with TBI: Clinical Practice Implications (Gail Powell-Cope, Bridget Hahm, Christina Dillahunt-Aspillaga, Jason Lind, Angelle Sander, Christine Melillo, Karen Besterman-Dahan, Kiersten Downs, Nicole Antinori) #288547 BI, MIL</p> 	
<p>FRI CONCURRENT SESSIONS BLOCK 5 10:30 AM – 11:45 AM</p>	<p>Validity Assessment In Persons With Claimed Brain Injury: Clinical and Forensic Caveats (Nathan Zasler, Scott Bender) #294874 BI</p>	<p>The Emotional Measure of Man: Objective Approaches to Assessing Emotional Function in Traumatic Brain Injury (Prin Amorapanth, Dawn Neumann, Valerie Ellois, Joseph Rath, Preeti Raghavan) #296992 BI, CP, MES</p>	<p>Translating TBI Research for Public and Policy Use: Products from CDC/NIDILRR Interagency Agreement (Juliet Haarbauer-Krupa, Gale Whiteneck, John Corrigan, Cate Miller, Ann Dellinger) #297206 BI</p>	<p>The Nature, Evolution, Predictors and Treatment of Psychiatric Disorders Following Traumatic Brain Injury (Jennie Ponsford) #304686 BI</p>	<p>Progressive Return to Activity After Concussion: Provider Training in a Mixed Method Study Modifies Practice (Karen McCulloch, Keith Stuessi, Jason Bailie, Wesley Cole, Mark Ettenhofer, Emma Gregory) #295737 BI, MIL</p>	<p>Translating the VA/DoD Clinical Practice Guidelines to a Civilian Population: Toward an Amputation Model System (George Gondo, Danielle Melton, Kristin Reeves, Joseph Webster, Jason Highsmith) #297045 LL, CP, MIL</p> 
<p>CONCURRENT SESSIONS BLOCK 6 2:30 PM – 3:45 PM</p>	<p>CDC: The Report to Congress on the Management of Traumatic Brain Injury in Children (Juliet Haarbauer-Krupa, Ann Glang, Brad Kurowski) #296634 BI, PED CROSSTAGGED</p>	<p>Varieties of Consciousness: Clinical and Ethical Implications (Sunil Kothari, Christos Lazaridis) #297260 BI</p>	<p>Measurement of Sleep in Neurorehabilitation: The role of actigraphy (Risa Nakase-Richardson, Mo Modarres, Don Fogelberg, Jennifer Travis-Seidl) #297208 BI, TEC, MIL</p>	<p>What You Need to Know About Assessment and Treatment of Social Cognition After Brain Injury (Dawn Neumann, Barbra Zupan, Rebecca Eberle) #283259 BI, CP, ST</p>	<p>Exercise for Individuals With Traumatic Brain Injury: Evidence and Clinical Practice (Shirley Shih, Can Ozan Tan, Mary Alexis Iaccarino, Ross Zafonte) #303653 BI, CP</p>	<p>Evidence-based Pharmacological Interventions After Traumatic Brain Injury (Sonya Kim, Lilian Hoffecker, Lauren Terhorst, Xiaolei Hu, Marianne Mortera, Shilpa Krishnan, Trudy Mallinson, Patricia Heyn) #289738 MES, BI, MIL CROSSTAGGED</p> 
<p>TIME DEVOTED TO EARLY CAREER PROFESSIONALS Check out these Early Career Stars...</p>						
<p>SAT CONCURRENT SESSIONS BLOCK 7 9:45 AM – 11:00 AM</p>	<p>NIDILRR ART Fellows Oral Presentation #334312 Details online & in the App</p>		<p>CLDR-Sponsored Young Investigators Panel: Secondary Analysis of Archived Datasets #297175 CC</p>		<p>Deborah L Wilkerson Early Career Award Winner: Emily Nalder (Oral Presentation) See more page 37 & more online: ACRM.org/onlineprogram</p>	
<p>CONCURRENT SESSIONS BLOCK 8 11:30 AM – 12:45 PM</p>	<p>Advancing TBI Sleep Research: Three Multi-Center Studies within the TBI Model System Program (Risa Nakase-Richardson, Tamara Bushnik, Jeanne Hoffman) #296362 BI, CP, NP</p>		<p>Electronic Accommodations for Students With TBI: A Vocational Rehabilitation Demonstration's Lessons Learned (Phil Rumrill, Deborah Hendricks, Eileen Elias) #295624 BI, TEC</p>		<p>SPECIAL SYMPOSIUM #334313 "Updates in Chronic Traumatic Encephalopathy" ANN MCKEE, MD, Director, CTE Center; Professor, Boston University/VA Medical Center</p> 	
<p>CONCURRENT SESSIONS BLOCK 9 1:00 PM – 2:15 PM</p>	<p>Hormonal influences on TBI and Stroke Rehabilitation Outcome (Grace Griesbach, Lisa Kreber, Jessica Ashley) #297086 BI, ST DISCOVER more at ACRM.org/bicontent</p>		<p>Getting the Most Out of the Traumatic Brain Injury Model Systems National Database (Jessica Ketchum, Dave Mellick) #289475 BI</p>	<p>Patient-Centered Vocational Rehabilitation for Individuals With Acquired Brain Injuries (Paige Salinas, Jennifer Featherston, Carlos Marquez de la Plata) #304683 BI, CP, ST</p>	<p>Evidence Based Assessment & Treatment of Children and Adolescents with Mild Traumatic Brain Injury (Barry Willer, Gerard Gioia, Christina Master, John Leddy) #294168 BI, CP</p>	<p>Emerging Technologies for Emotion Regulation after TBI (Tracey Wallace, John Morris, Leighanne Davis) #288421 TEC, BI, MIL CROSSTAGGED</p> 

CHAUTAQUA “My Personal Experience is Better Than Your Evidence: Knowledge Translation and Implementation Challenges in BI” #336155

MODERATOR: John Corrigan, PhD, FACRM



PRESENTERS: John Banja, PhD; Mark Bayley, MD, FRCPC and Larissa Swan, MS, OTR

In this interactive session, the presenters will lead a thought-provoking discussion about impediments to translation and implementation of brain injury research and share their experiences with these efforts, focusing on potential solutions and strategies to overcome the barriers to advancing evidence-based care.

SPECIAL SYMPOSIUM “Treating Fatigue And Sleep Disturbance Following Traumatic Brain Injury” #301438 **JENNIE PONSFORD, BA (Hons), MA, PhD**, Professor of Neuropsychology and Director, Monash Epworth Rehabilitation Research Centre, Monash University
Despite the fact that fatigue and/or sleep disturbance are reported by up to 70 percent of individuals with moderate to severe traumatic brain injury (TBI), there is still limited understanding of their causes as well as a lack of evidence-based treatments. This symposium will present findings from studies of fatigue and sleep disturbance following TBI in order to shed light on possible causative factors, which include factors relating to the brain injury, including cognitive impairments and reduced melatonin production and the injured individual’s psychological problems with depression anxiety and pain. Based on these findings our research group has developed and evaluated three treatments for fatigue and sleep disturbances: Light therapy, cognitive-behavioural therapy and melatonin. Findings from recently completed randomized controlled trials of these treatments will be presented.

“I was thrilled to learn Dr. McKee would be joining us at ACRM this year. Her program of research is informing opportunities for detection, management and prevention of brain injury, which is highly relevant to rehabilitation professionals.”

—Kristen Dams-O’Connor, PhD

MILITARY / VETERANS AFFAIRS NETWORKING GROUP

Don’t miss this Networking Group Meeting
THU 26 OCT 7:00 - 8:00 AM

This group builds bridges to close the gaps between the rehab science, non-government ACRM members and VA personnel all working for IMPROVING LIVES and addressing the specific needs of rehab in the military. Connect with this group and meet them in Atlanta and discover opportunities for leadership and task force involvement.

SEE MORE MILITARY CONTENT:

www.ACRM.org/MILcontent



BRAIN INJURY INTERDISCIPLINARY SPECIAL INTEREST GROUP

BI-ISIG EXECUTIVE COMMITTEE

CHAIR

Jennifer Bogner, PhD, ABPP-Rp, FACRM

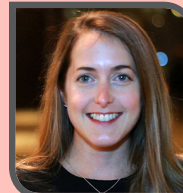
Ohio Valley Center for Brain Injury Rehabilitation and Prevention, Ohio State University, Columbus, OH



CHAIR-ELECT

Kristen Dams-O’Connor, PhD

Mount Sinai Brain Injury Research Center, New York, NY



PAST-CHAIR

Donna Langenbahn, PhD, FACRM

Rusk Rehabilitation, NYU Langone Medical Center, New York, NY



TREASURER

Alan Weintraub, MD

Craig Hospital, Englewood, CO



SECRETARY

Tessa Hart, PhD, FACRM

Moss Rehabilitation Research Institute Elkins Park, PA



EARLY CAREER OFFICER

Monique Pappadis, PhD

University of Texas Medical Branch – Galveston, Galveston, TX



COMMUNICATIONS CHAIR & INTERNATIONAL NETWORKING LIAISON (EX-OFFICIO)

Kristine Kingsley, PsyD, ABPP-Rp

Rusk Rehabilitation, NYU Langone Medical Center, New York, NY



PROGRAM/AWARDS CHAIR

Dawn Neumann, PhD

Indiana University School of Medicine Indianapolis, IN

